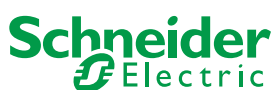


YOUR PARTNER FOR **SAFE AND RELIABLE** LV SWITCHBOARDS



VENORA LANKA POWER PANELS (PVT) LTD.
IS A BOI APPROVED COMPANY THAT OPERATES IN EXPORT PROCESSING ZONE,
BIYAGAMA, SRI LANKA

Authorised Systems Integrator for



Prisma iPM
LOW-VOLTAGE FUNCTIONAL SWITCHBOARD SYSTEM
COMPLIANT TO IEC 61439-1 & 2 STANDARD

INDEX

- SRI LANKA AS AN EXPORTER
- A WORLD TOP RANKED MANUFACTURING ZONE (EPZ BIYAGAMA)
- VENORA LANKA POWER PANELS

TECHNICAL INFORMATION

1. Product Specifications
 2. Panel Configurations
 3. Panel Assembly Guide Lines
 4. Standard & Panel Testing
 5. Certifications
- PROJECT REFERENCES
 - CONTACT US
 - TESTIMONIALS AND AWARDS

100% IEC STANDARD

IEC 61439 -1 & 2 STANDARD:

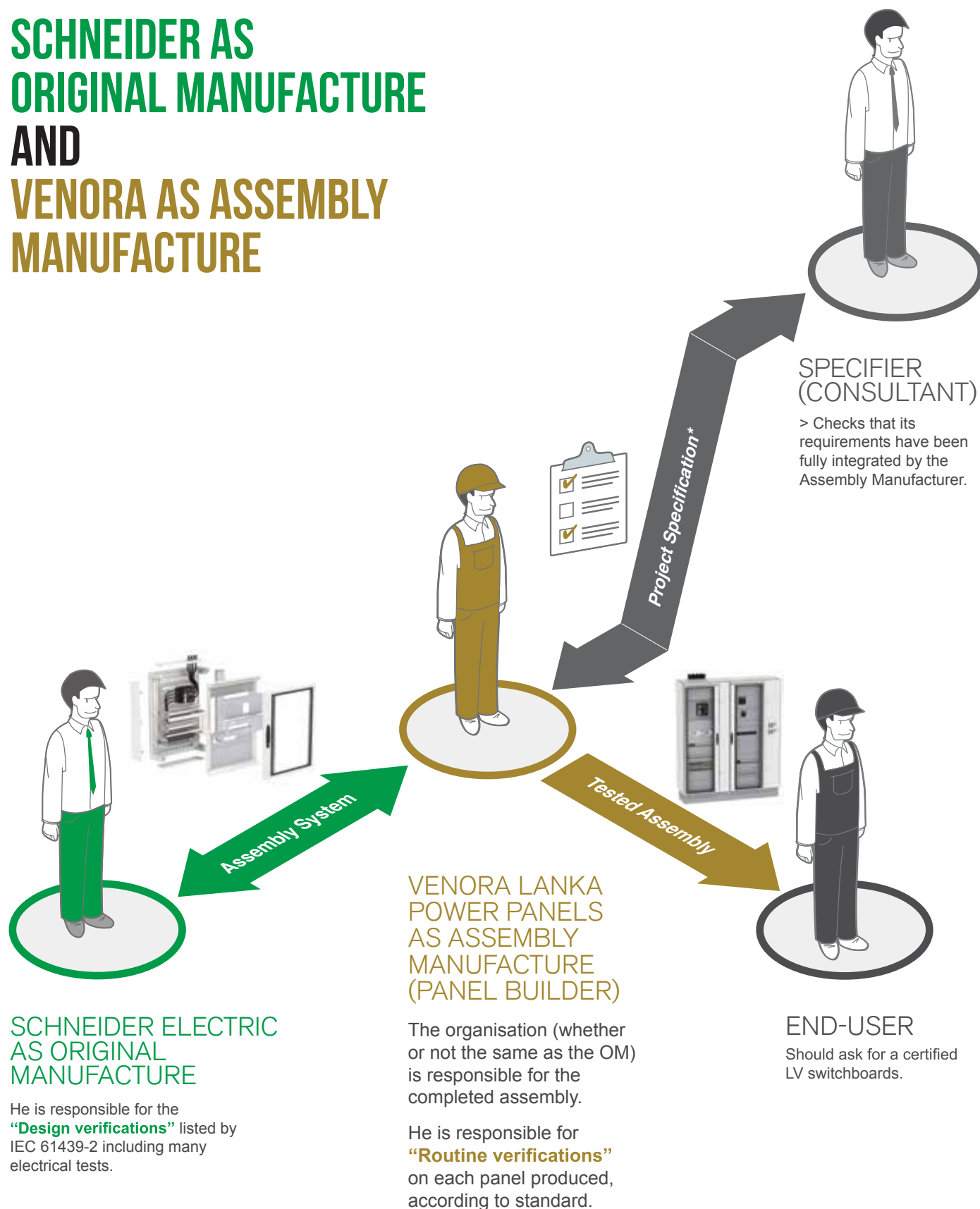
THE IEC 61439 -1 & 2 STANDARD IS ESTABLISHED WORLDWIDE.

**OUR GOAL IS TO REPRODUCE
PANEL CONFIGURATIONS
IDENTICAL OR EQUIVALENT TO
THOSE ASSESSED
IN A LABORATORY DURING
CERTIFICATION TESTING.**



**WORLDWIDE TECHNICAL SUPPORT -
SCHNEIDER ELECTRIC EXTEND THEIR
SUPPORT TO PANEL BUILDERS/CONTRACTORS
AND END USERS THROUGH WORLDWIDE
NETWORK OF SCHNEIDER ELECTRIC.**

SCHNEIDER AS ORIGINAL MANUFACTURE AND VENORA AS ASSEMBLY MANUFACTURE



SCHNEIDER ELECTRIC AS ORIGINAL MANUFACTURE

He is responsible for the "Design verifications" listed by IEC 61439-2 including many electrical tests.

VENORA LANKA POWER PANELS AS ASSEMBLY MANUFACTURE (PANEL BUILDER)

The organisation (whether or not the same as the OM) is responsible for the completed assembly.

He is responsible for "Routine verifications" on each panel produced, according to standard.

END-USER

Should ask for a certified LV switchboards.



MADE IN SRI LANKA

Sri Lanka is known as an economic and knowledge hub in the Asian region and is situated in a strategic location of the Indian Ocean with easy access to many countries in the region and other parts of the world.

BUSINESS CLIMATE:

Comparisons have shown that Sri Lanka offers one of the most liberal business environments in Asia. This has been made evident by the operation of multinational companies in Sri Lanka.

ACCESSIBILITY:

Sri Lanka is accessible to the world through all international flights and shipping lines operating worldwide.

HUMAN RESOURCE:

Our workforce comprises of highly skilled professional and technical staff, who are trained by national universities and technical colleges.

EXPORTS:

Sri Lanka exports semi or fully assembled Electrical and Electronics peripherals to Europe which are used for mission critical applications such as Cloud and Service Providers, Data Centres, Oil and Gas etc..

WE OPERATE FROM THE EXPORT PROCESSING ZONE IN BIYAGAMA

Infrastructure facilities at Biyagama zone include reliable power supply, treated water, telecommunication systems, a paved road network, security systems and chain-link fencing. The Biyagama Export Processing Zone has served as a model zone in the Asian region. The Sri Lankan organisations concentrate highly on quality and the reliability of products. They are equipped with quality certification such as ISO and are maintained by highly skilled technicians.



BENEFITS TO CUSTOMERS

Customers can enjoy products at an economical and competitive price due to the fact that tax incentives and tax holidays are offered by BOI (Board of Investments) Sri Lanka to Exporters. Consultancy from Foreign Experts and Industry Specialists are taken under BOI privileges. Visa to visit Sri Lanka could be arranged for Inspections and Factory Acceptance Tests.

INFRASTRUCTURE FACILITIES



TRANSPORT:

Located at the BEPZ which is strategically located for quick and easy access to the Colombo International Harbour and Colombo International Airport within 30 minutes via highways.



TELECOM:

BEPZ is covered by 4G telecommunication technology services for timely communication with B2B customers which makes industries competitive in Asia.



POWER:

Uninterrupted power supply is assured via hydro energy to a great extent. In addition, thermal capacity fulfills the balance demand.





VENORA LANKA POWER PANELS (PVT) LTD.

KNOWLEDGE AND EXPERIENCE:

Qualified Engineering and Technical Staff have over twenty years of experience in Designing and Manufacturing Electrical Panel Boards. The staff has been fully trained and guided by Schneider Electric Engineers for Prisma Panel assembly.

FACTORY CAPACITY:

The factory is equipped with modern manufacturing facilities and the space layout is such that it creates a healthy working environment. It is equipped with necessary testing tools to suit the IEC 614398 standard for routine testing. Production procedures are guided by ISO 9001 quality standards.

FINANCIAL STRENGTH:

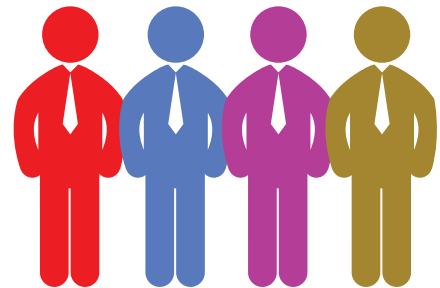
Venora Lanka Power Panels (Pvt) Ltd transact closely with many local and foreign banks. VLPP is financially backed and strengthened by a USD 2 million bank facility.

WORLDWIDE AFTERSALES SUPPORT:

We take constant measures to maintain and upgrade Prisma Panels through the worldwide network of Schneider Electric. We take the advantage of worldwide presence of Schneider Electric to minimise the downtime of Distribution Boards and related services provided by VLPP.



VENORA GROUP

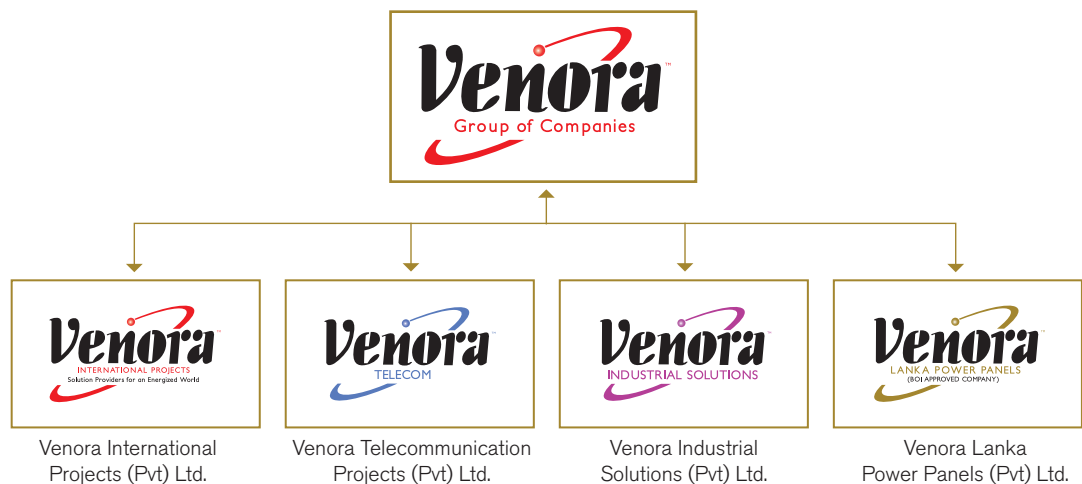


Venora is the one of the leading companies in the field of Electrical Engineering & Telecommunication in Sri Lanka, operating with mission to be "Solution Providers for an Energised World". Procedures are managed under ISO 9001 quality certifications.

We cover a wide range of services including design & supply of Electrical Systems Low/High & Extra Low Voltage, Switch Boards & Power Factor Correction Systems, Installation of Telecommunication Equipment, Lightning and Surge Protection with our world renowned brands.

Venora International became the first Sri Lankan company to have the License (in accordance with the UK Trade Marks Act 1994 and EBA Awards regulations) to use the trade Mark "Best Enterprise".

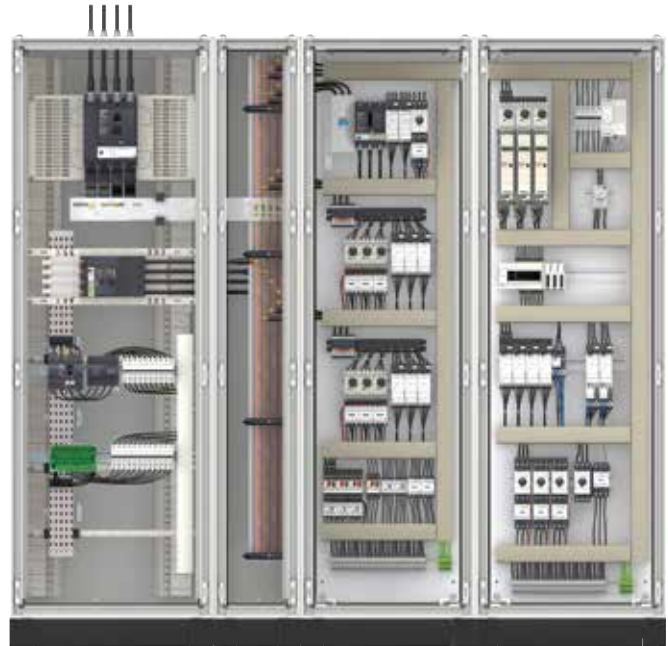
Venora Group of Companies has about 700 employees and the Group could be recognised as the leading service provider in the sphere of electrical engineering in Sri Lanka.



TECHNICAL INFORMATION

- **PRODUCT SPECIFICATION**
- **PANEL CONFIGURATIONS**
- **PANEL ASSEMBLY GUIDE LINES**
- **PANEL TESTING**
 - LABORATORY TESTS
 - ROUTINE TESTS
 - FACTORY ACCEPTANCE TESTS
- **CERTIFICATIONS**
- **PROJECT REFERENCES**
- **CONTACT US**
- **AWARDS & TESTIMONIALS**





Prisma iPM

Authorised Systems Integrator

VENORA LANKA POWER PANELS

APPLICATIONS

- CLOUD AND SERVICE PROVIDERS
- MINING, METALS AND MINERALS
- DATA CENTRE & NETWORKS
- WATER AND WASTE WATER
- OIL AND GAS
- PROVIDE ACCESS TO ENERGY
- FINANCE
- HEALTHCARE
- MACHINE BUILDERS/INDUSTRY AUTOMATION
- WEATHER
- BUILDINGS AND COMMON SERVICES

QUALITY COMPLIANCES :

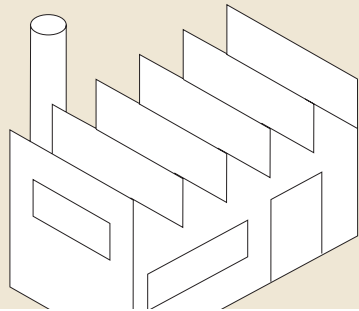
MANAGEMENT STANDARD/ PRODUCT STANDARD/ ASSEMBLY STANDARD

Factory Standard – ISO 9001 – Quality Management System

Electrical Panel Assembly Standard – IEC 61439 – 1 and 2

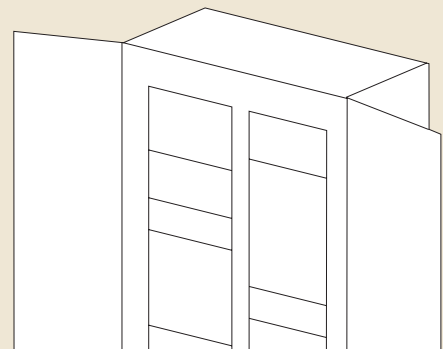
Switchgear Devices – IEC 60947 1 to 4

ISO 9001
Green Certificate
UK Trade Certificate



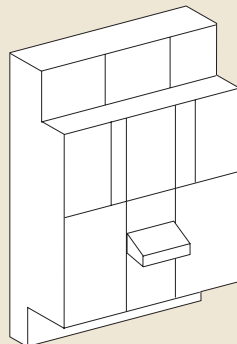
Design and manufacture

IEC 61439-X
Asefa Type Tested Certificate



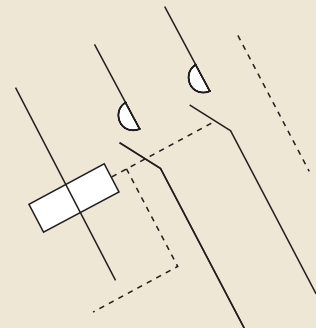
Switchgear assemblies

IEC 60947-X



Switchgear devices

IEC 60364-X



Installation

PRODUCT SPECIFICATIONS

Electrical characteristics

| | |
|--|--------------------------------|
| Rated insulation voltage U_i (V AC) | 1000 |
| Rated operation voltage (V AC) | 690 |
| Rated impulse withstand voltage (KV) | 12 |
| Frequency (Hz) | 50/60 |
| Main busbar rated current max. I_e (A) | 3200 / 4000 |
| Rated short-time withstand current I_{cw} (KA/ 1 s.) | 100 |
| Rated peak withstand current I_{pk} (KA) | 220 |
| Neutral network | TNC V TNS V IT V TT V |

Mechanical characteristics

| | |
|--|--|
| Overall height (mm) | 2000 |
| Number of vertical modules (functional height) 1 module = 50 mm | 36 |
| Depth (mm) | 400/600 (front access), 800/1000 (rear access) |
| Width of enclosure for devices (mm) | 600 and 800 |
| Width of busbar duct (mm) | 200 (in 800 mm wide enclosure) |
| Width of cable duct (mm) | 300 and 400 |
| Partitioning | Form 1, 2, 3b and 4b |
| IP | 30/31/54 |
| IK | 07/08/10 |

Applicable standards

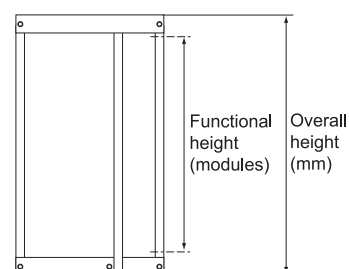
| | |
|---|------------|
| Type test | IEC61439-1 |
| IP class | IEC60529 |
| Insulation materials inside of enclosures | IEC60695 |

Environment conditions

| | |
|--------------------------|---------------|
| Operation | indoor |
| Altitude max. (m) | 2000 |
| Temperature average (°C) | 35 °C |
| Temperature max. (°C) | 50 °C |
| Temperature min. (°C) | 0 °C |
| Environmental conditions | Environment B |
| Degree of pollution | 3 |

Others

| | |
|--|---|
| Enclosure materials | sheet metal |
| Painting | epoxy resin powder electrostatic sprayed |
| Colour | RAL 7047 (enclosure) and RAL 9022 (functional unit) |
| Insulation materials inside of enclosure | high-temperature withstand, combustion self-prevent |

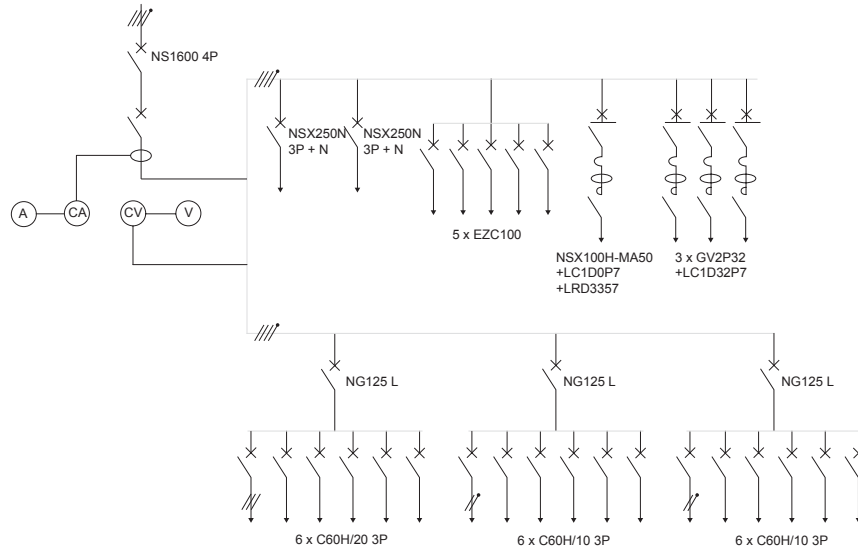


Prisma iPM

Authorised Systems Integrator

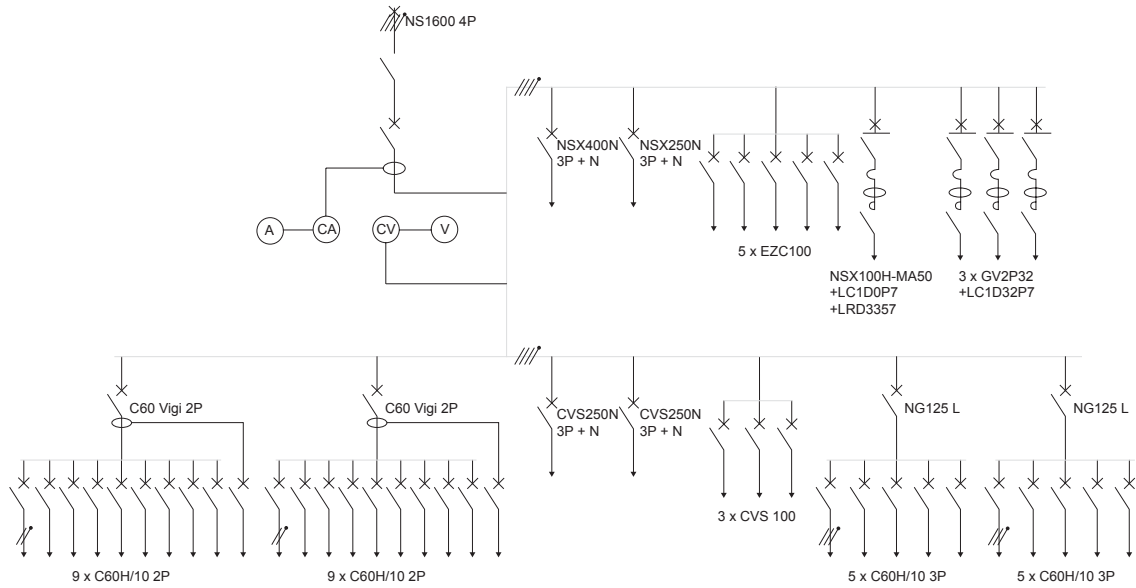
VENORA LANKA POWER PANELS

Floor standing system M front access configuration



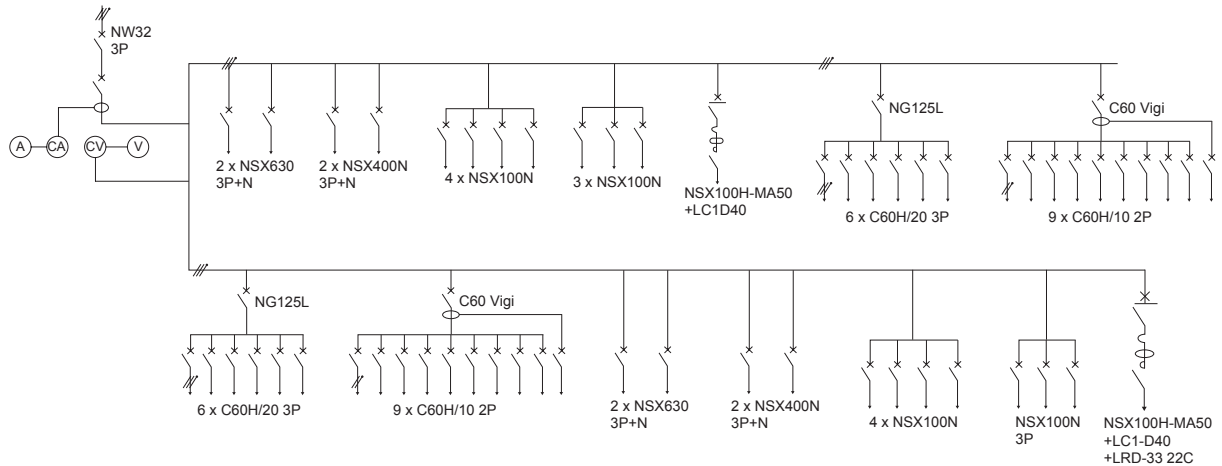
COMPLIANT TO IEC 61439 -1 & 2 STANDARD
Asefa Type Tested

Floor standing system M front access configuration



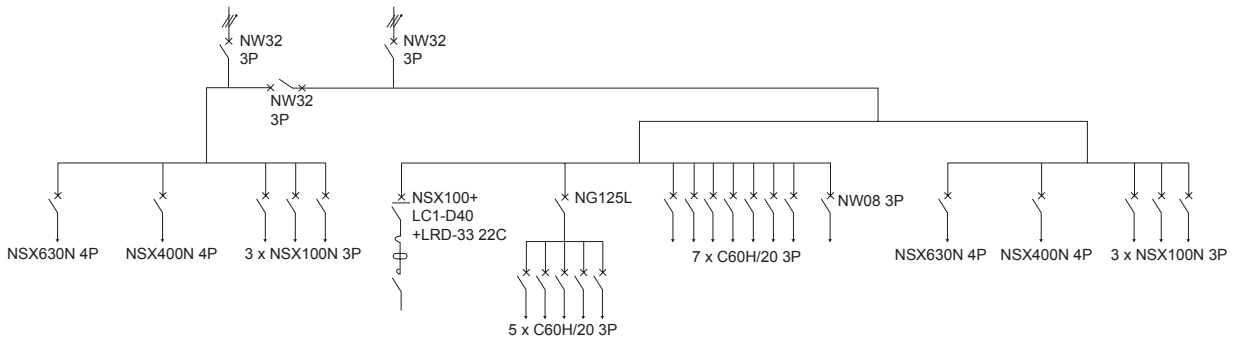
COMPLIANT TO IEC 61439 -1 & 2 STANDARD
Asefa Type Tested

Floor standing system M front access configuration



COMPLIANT TO IEC 61439 -1 & 2 STANDARD
Asefa Type Tested

Floor standing system M front access configuration



COMPLIANT TO IEC 61439 -1 & 2 STANDARD
Asefa Type Tested

Floor standing system M front access configuration



COMPLIANT TO IEC 61439 -1 & 2 STANDARD
Asefa Type Tested

Configuration for outgoing functional units



COMPLIANT TO IEC 61439 -1 & 2 STANDARD
Asefa Type Tested

ROUTINE TESTING

1. Degree of protection provided by enclosures
2. Insulation clearances and creepage distances
3. Protection against electric shocks and integrity of protection circuits
4. Integration of incorporated components
5. Internal electric circuits and connections
6. Terminals for external conductors
7. Mechanical operation
8. Dielectric properties
9. Wiring, operating performance and function

CHECK SHEET

In accordance with the IEC 61439 - 1 and 2 standard

Job No.:

Switchboard No.:

Drawing No./Rev. No.:

| | Verified |
|---|----------|
| Degree of protection provided by enclosures | v |
| Insulation clearances and creepage distances | v |
| Protection against electric shocks and integrity of protection circuits | v |
| Integration of incorporated components | v |
| Internal electric circuits and connections | v |
| Terminals for external conductors | v |
| Mechanical operation | v |
| Dielectric properties | v |
| Wiring, operating performance and function | v |

Date of verification:

..... / /

Verifications performed by:

.....

VENORA LANKA POWER PANELS (PVT) LTD.



POWER MONITORING EXPERT SOFTWARE (PME)

Power Monitoring Expert Enterprise software by **Schneider Electric** is a complete power management solution for your facility or plant operations. It is a scalable software platform with options to support different numbers of remote devices and user clients.

- Analysis of efficiency, losses and capacity
- Bill verification, cost allocation and sub-billing
- Power quality analysis and compliance monitoring
- Problem notification and diagnosis
- Demand or power factor management
- Control of loads, generators or other equipment
- Support real-time pricing, demand response or curtailment programmes
- Monitor and report on WAGES (Water, Air, Gas, Electrical, Steam) utility usage

INFORMATION CENTRE

| DIVISION | CONTACT NO. | MAIL ID |
|--------------------------------|---------------------|-----------------------------|
| Sales Inquiries and Aftersales | +94 (0) 75 381 3398 | bdm@venoragroup.com |
| Engineering & Estimation | +94 (0) 75 903 3990 | venorapanel@venoragroup.com |
| Accounts and Logistics | +94 (0) 75 932 9142 | venoraac@venoragroup.com |

Online quotation requests (Please use your user name and password)
www.venoragroup.com/onlinequotation



Factory:

Lot 32 BEPZ, Malwana, Biyagama, Sri Lanka.
Tel: +94 11 2489580 | Fax: +94 11 2489582

City Office:

No. 41/1, Bambalapitiya Drive, Colombo 4, Sri Lanka.
Tel: + 94 112559073 | Fax: + 94 112559074

PROJECT REFERENCES

| PROJECT NAME | CLIENT/ CONSULTANT | YEAR |
|---|--|---------|
| Fair View Hotel @ Wellawatta | Mercantile Investment (Pvt) Ltd. | May -15 |
| George Steuart Building @ Colombo 01 | George Steuart Engineering (Pvt) Ltd. | Jul -15 |
| Business Centre for ICC Development Holdings (Pvt) Ltd. | ICC (Pvt) Ltd. | May -15 |
| Uga Park Street Hotel @ Park Street, Colombo 02 | Alpha Industries (Pvt) Ltd. | Jan -15 |
| On 320 Condominium Project @ Union Place, Colombo 02 | Sanken Construction (Pvt) Ltd. | Oct -14 |
| Highway Secretariat Building @ Battaramulla | Nawaloka Construction (Pvt) Ltd. | Oct -14 |
| The Ocean Colombo Hotel @ Colombo 04 | DH Wijewardena Associates | Sep -14 |
| Modification of Electrical System for Brandix Casualwear (Pvt) Ltd. | Brandix Casualwear Ltd. | Oct -14 |
| S & D Chemicals (Pvt) Ltd. @ Biyagama | S & D Chemicals Associates | Dec -14 |
| 100 Rooms Hostel Building for University of Peradeniya (Three Blocks) | Sunhill Engineering (Pvt) Ltd. | Apr -15 |
| Hostel Building for Wayamba University (Three Blocks) | Sanken Construction (Pvt) Ltd. | Sep -14 |
| Waskaduwa Beach Resort - Citrus Leisure | George Steuart Engineering (Pvt) Ltd. | Mar -14 |
| Lalan Rubber (Pvt) Ltd. | Lalan Rubber (Pvt) Ltd. | Apr -14 |
| Brandix Casualwear @ Avissawella (Floor expansion & Ciller Installation) | Brandix Casualwear Ltd. | Jan -14 |
| Mackson Lanka (Pvt) Ltd. | Mackson Tile Lanka (Pvt) Ltd. | Jan -14 |
| Holiday Resort @ Kosgoda | Ms. Otara Gunawardena | Mar -13 |
| Extension to Club Palm Bay Hotel @ Marawila | Marawila Resorts PLC | Jan -13 |
| Electrical & Generator Installation @ Hambantota Branch of CSE | Stock Exchange/ Architect - Q Serve | May -13 |
| Sasiri Polysacks (Pvt) Ltd. | Sasiri Polysacks (Pvt) Ltd. | Dec -13 |
| Extension to VVIP Building @ BIA & Refurbishment to VVIP Building @ BIA | Sanken Construction (Pvt) Ltd. | Nov -13 |
| Refurbishment of Avani Kalutara Resort | Serendib Leisure Management Ltd. Consultant - Mr. Gamunu Wijegunawardena | Nov -12 |
| Kandalama Hotel @ Dambulla | Sanken Lanka (Pvt) Ltd. Consultant - BSC, Architect - MICDA | Sep-12 |
| Cinnamon Bay @ Beruwala | ICC (Pvt) Ltd. Architect - MICDA Design. Consultant - Mr. R.Guruge | Nov -12 |
| Multi Storeyed Building for Institute of Chartered Accountants of Sri Lanka | Sanken Construction (Pvt) Ltd. | Dec-12 |
| Main Switching Centre for Bharthi Airtel Lanka (Pvt) Ltd. | Bharthi Airtel Lanka (Pvt) Ltd. | Jun -12 |
| Additions and Alterations of Existing Citrus Hotel at Hikkaduwa | Hikkaduwa Beach Resort Limited. Consultant: Mr. Terrance Gunawardena | Nov -11 |
| Colombo Stock Exchange @ WTC | Stock Exchange/ Architect - Q Serve | Feb -11 |
| University of Sri Jayewardenepura | University of Sri Jayewardenepura | May -11 |
| Airport & Aviation Services (Sri Lanka) Ltd. | Airport & Aviation Services (Sri Lanka) Ltd. | Sep -11 |
| Muhandiram E. Dabare Road Apartment Housing Project | Sanken Construction (Pvt) Ltd. Consultant : Design Group 5 | |
| Higurana Distilleries | Higurana Distilleries (Pvt) Ltd. | Jun -11 |
| President House Office | President Secretariat | Jul -10 |
| President Media Centre | President Secretariat | Apr -10 |
| Kandy Hotel School | Ministry of Tourism, Sri Lanka, Sanken Construction (Pvt) Ltd. | Nov -09 |
| Arpico Super Centre, Negombo | RPC Retail Development (Pvt) Ltd., ZEUSE Consultants | May -09 |
| National Disaster Management Centre | Sujith Mohatti Associates | Sep -09 |
| Abans Hyper Market, Welisara | Abans Ltd./Mr. Sumith Ajantha Associates | May -08 |
| Car Assembling (Pvt) Ltd. @ Lunugamvehera | IWS Holdings (Pvt) Ltd. | Feb -08 |
| Mixture Line of Arpico Rubber Compounds (Pvt) Ltd. | Richard Peiris Rubber Compounds (Pvt) Ltd./ L.S.Perera Associates | Jun -07 |
| AdamJee Extractions (Pvt) Ltd. | Adamjee Extraction (Pvt) Ltd. | Apr -07 |
| MGM Entertainment Complex | Architect - Mr. Bentiyo Geniva, Consultant - N.J. Consultant | Mar -07 |
| Factory Complex for RPC Polymers (Pvt) Ltd. | RPC Polymers (Pvt) Ltd., DPM Consultants | Dec -07 |
| Nartha Agro Industries, Nugape, Pamunugama | Nartha Agro Industries (Pvt) Ltd. | May -07 |
| Hotel Topaz in Kandy | Kandy Ready Mix (Pvt) Ltd. | Sep -06 |
| Robinson Club, Bentota | H.W. Achitect / Consultant - Mr.Wijitha Perera | Aug -06 |
| Kani Lanka Resort & Spa in Kalutara Phase I & II | Cyprea Pte Ltd/ Mr.M.Rasheed/ Mr. Ishan Rasheed | Dec -06 |
| Crescat Life Style Complex | DCL (Pvt) Ltd. | Feb -06 |
| British Living Apartment | Sierra Construction (Pvt) Ltd. | Oct -06 |



CERTIFICATIONS

Product Certificate

- Asefa Type Tested Certificate

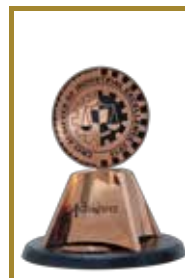
Management Certificates

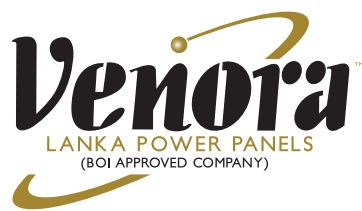
- Green Certificate - Environment
- ISO 9001 Standard Certificate - Procedures
- UK Trade Certificate - Good Governance



AWARDS & TESTIMONIALS

- 2010 Honourary Award for the "Trusted Service" to the Engineering Sector in Sri Lanka at the Swarna Lanka Award Ceremony.
- Commemorating the Launch of 1,000 Base Stations in Sri Lanka September - 2010
- Arch of Europe for Quality & Technology Award Frankfurt - 2012
- The Global Award for Perfection, Quality and Ideal Performance Rome - Italy 2012
- Venora International became the first Sri Lankan company to have the License (in accordance with the UK Trade Marks Act 1994 and EBA Awards regulations) to use the Trade Mark "Best Enterprise"





VENORA LANKA POWER PANELS (PVT) LTD.

Lot 32 BEPZ, Malwana, Biyagama, Sri Lanka.
Tel : +94 11 2489580 | Fax : +94 11 2489582 | Web : www.venoragroup.com